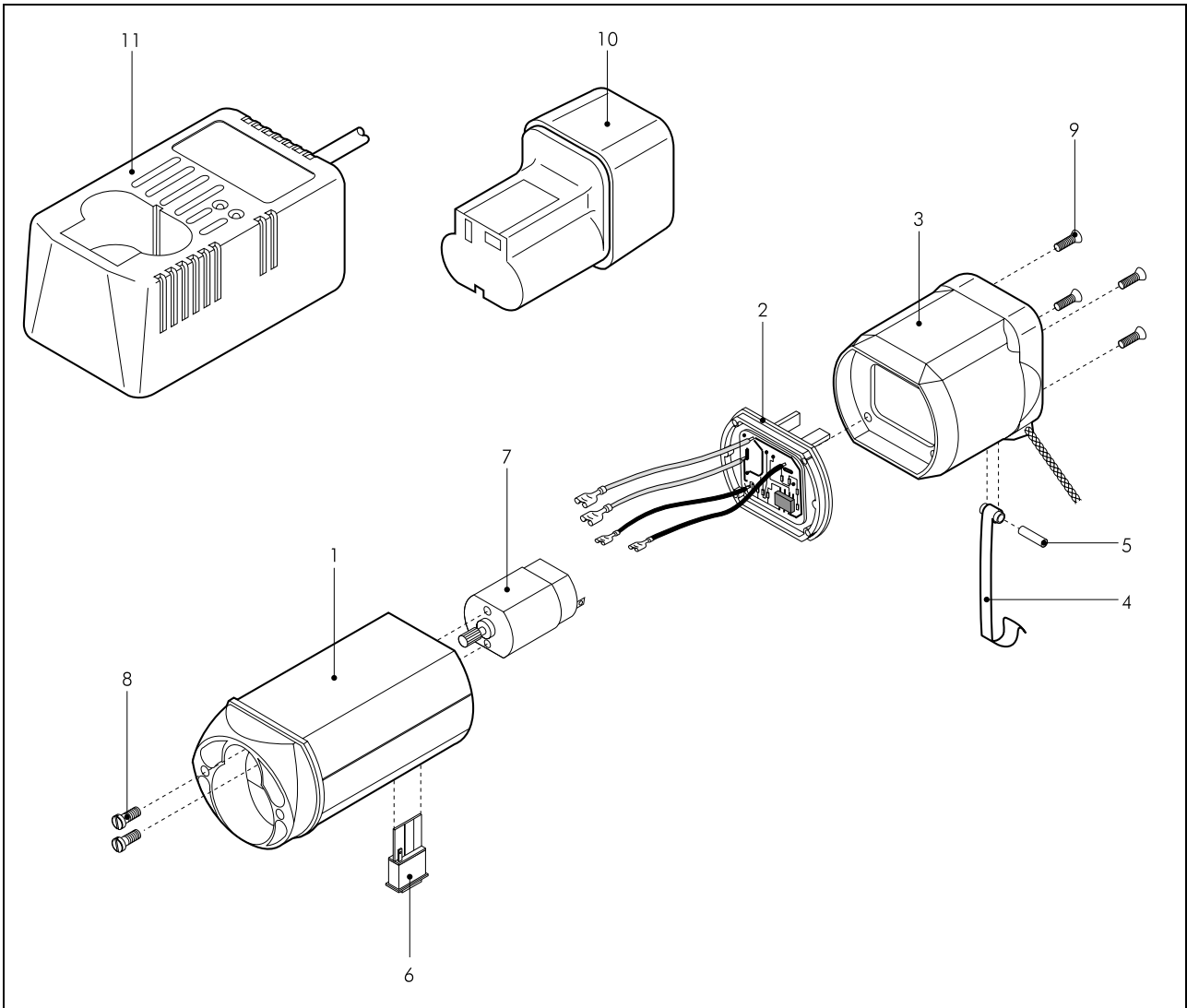


POS	ART-NO	DESCRIPTION	TOTAL
	701-740	Clipper head assembly Mod. BC incl. blades	
1	706-501	Clipper head case	1x
2	706-503	Cutter driving carrier	1x
3	706-505	Crank spindle sleeve	1x
4	706-506	Crank spindle	1x
5	706-507	Crank drive block	1x
6	701-710	Gear wheel 52 teeth	1x
7	706-509	Tension screw	1x
8	706-510	Distance screw	1x
9	706-511	Pressure plate	1x
10	706-514	Centering ring	2x
11	706-517	Pressure spring	1x
12	706-518	Laminated springs complete	2x
13	706-520	PH screw M5 x 16	2x
14	706-521	Blade screw M6 x 14	2x
15	701-713	PT screw flat KA 40 X 14	2x
16	706-524	Circlip Benzing for gear wheel Ø6 DIN 6799	1x
17	706-525	Cylindric screw with shank M3 x 6	2x



POS	ART-NO	DESCRIPTION	TOTAL
1	701-701	Motor housing	1x
2	701-702	Connection plate with overload security	1x
3	701-703	Housing junction	1x
4	701-704	Spring with bush	1x
5	701-705	Tension pin 3,5 x 22	1x
6	701-706	Switch BC	1x
7	701-709	Motor BC with gear	1x
8	701-711	PPH screw M2,6 x 6	2x
9	701-712	PT screw KA 35 x 18	4x
10	701-715	NiCd-accu 7,2V / 1,7Ah	1x