

PROFESSIONAL PRODUCTS- PET NAIL GROOMERS

SERVICE NUMBER

129-01A/-01B

129-01E

129-01F

129-01H

129-01J

129-01K

129-10

To select the model desired, click on the highlighted service number.



PARTS LIST

PET NAIL GROOMER

**USE ONLY GENUINE OSTER PARTS -
USE OF WRONG PARTS MAY BE HAZARDOUS.**

PUBLISHED BY TECHNICAL SERVICES

NEW MODEL(S) ADDED → FIRST ISSUE 6/76, COLUMN #1
FIRST ISSUE 5/80, COLUMN #2

| | |
|-------------------|---------------|
| BB-390 | REVISED 10/97 |
| PART NO. REVISION | |

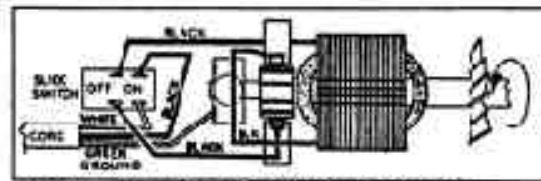
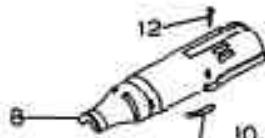
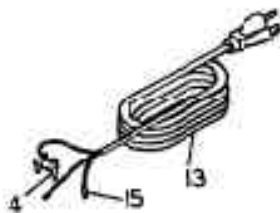
D-5



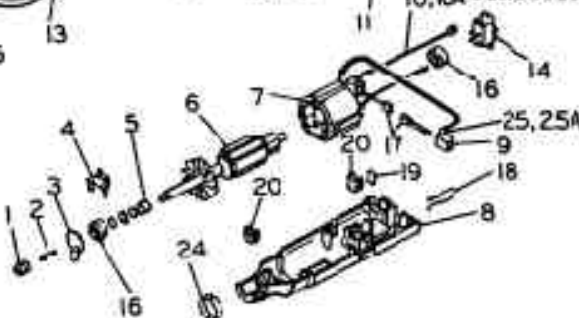
| | | | | | | | | | | | | | | | | | | | |
|-----------------------------------|--------|---|---|---|---|---|---|---|---|----|----|----|--|--|--|--|--|--|--|
| 115 VOLTS, 50/60 HZ. AC 0.80 AMPS | X | X | | | | | | | | | | | | | | | | | |
| MODEL OR SERVICE NO. COLUMN | 1 | 2 | 3 | 4 | 5 | 6 | 7 | 8 | 9 | 10 | 11 | 12 | | | | | | | |
| SERVICE NOTES | M-6085 | | | | | | | | | | | | | | | | | | |
| COL. NO. | 1 & 2 | | | | | | | | | | | | | | | | | | |

| INDEX NO. | PART NO. | ★ WAS PART NO. | DESCRIPTION | BASIC PARTS | 129-01-A | 129-B | QUANTITY REQUIRED | | | | | | | | | | | | | |
|------------------------|----------|----------------|--------------------------------|-------------|----------|-------|-------------------|--|--|--|--|--|--|--|--|--|--|--|--|--|
| 1 | 206578 | | CHUCK CAP | 1 | | | | | | | | | | | | | | | | |
| 2 | 206579 | | COLLET - 1/8" | 1 | | | | | | | | | | | | | | | | |
| 3 | 206580 | | STOP PIN W/ SPRING | 1 | | | | | | | | | | | | | | | | |
| 4 | 206581 | | BEARING RETAINER | 2 | | | | | | | | | | | | | | | | |
| 5 | 206592 | | WASHER - SET OF FIVE | 1SET | | | | | | | | | | | | | | | | |
| 6 | 206582 | | ARMATURE ASSEMBLY W/FAN | 1 | | | | | | | | | | | | | | | | |
| 7 | 206583 | | FIELD ASSEMBLY | 1 | 1 | | | | | | | | | | | | | | | |
| 7 | 211400 | | FIELD ASSEMBLY | 1 | | 1 | | | | | | | | | | | | | | |
| 8 | 207801 | | HOUSING - UPPER & LOWER SET | 1 | | | | | | | | | | | | | | | | |
| 9 | 206593 | | BRUSH HOLDER | 1PR | | | | | | | | | | | | | | | | |
| 10 | 206585 | | LEADWIRE W/BRUSH CLIP | 1 | 1 | | | | | | | | | | | | | | | |
| 10A | 211403 | | LEADWIRE W/BRUSH CLIP | 1 | | 1 | | | | | | | | | | | | | | |
| 11 | 206591 | | FILED SPRING | 1 | | | | | | | | | | | | | | | | |
| 12 | 206594 | | SCREW - SET OF FIVE | 1SET | | | | | | | | | | | | | | | | |
| 13 | 206586 | | CORD & PLUG ASSEMBLY - BLACK | 1 | | | | | | | | | | | | | | | | |
| 14 | 206587 | | SWITCH - SLIDE | 1 | | | | | | | | | | | | | | | | |
| 15 | 212642 | 72920 | TERMINAL - PUSH-ON | 4 | | | | | | | | | | | | | | | | |
| 16 | 55160 | 206595 | BEARING - SET OF TWO | 1SET | | | | | | | | | | | | | | | | |
| 17 | 211402 | | BRUSH & SPRING ASSEMBLY | 1PR | | 1PR | | | | | | | | | | | | | | |
| 18 | 206588 | | HANGER | 1 | | | | | | | | | | | | | | | | |
| 19 | 206589 | | THRUST PLATE | 1 | | | | | | | | | | | | | | | | |
| 20 | 207800 | | OIL WICK - FELT | 1PR | | | | | | | | | | | | | | | | |
| 24 | 206590 | | RETAINING RING | 1 | | | | | | | | | | | | | | | | |
| 25 | 206585 | | BRUSH CLIP (CLIP OFF LEADWIRE) | 1 | 1 | | | | | | | | | | | | | | | |
| 25A | 211403 | | BRUSH CLIP (CLIP OFF LEADWIRE) | 1 | | 1 | | | | | | | | | | | | | | |
| ACCESSORY ITEMS | | | | | | | | | | | | | | | | | | | | |
| 28 | 207350 | | WRENCH | 1 | | | | | | | | | | | | | | | | |
| 29 | 55208 | 207352 | GRINDING DISC | 1 | | | | | | | | | | | | | | | | |
| 30 | 55207 | 207351 | DRESSING TONE | 1 | | | | | | | | | | | | | | | | |

NOTE: NUMBERS SHOWN ON DRAWINGS ARE INDEX NUMBERS ONLY. ORDER PARTS BY CORRECT PART NUMBER.



MOTOR TO RUN IN COUNTERCLOCKWISE DIRECTION VIEWED FROM FAN END.



★ PARTS ARE INTERCHANGEABLE, USE UP EXISTING STOCK.

MANUAL: PROFESSIONAL PRODUCTS
SECTION: NAIL GROOMER

CONTINUED ON REVERSE SIDE



150 CADILLAC LANE
McMINNVILLE, TN 37110



PARTS LIST

PET NAIL GROOMER

**USE ONLY GENUINE OSTER PARTS -
USE OF WRONG PARTS MAY BE HAZARDOUS.**

PUBLISHED BY TECHNICAL SERVICES

BB-682 REVISED 10/97

PART NO. REVISION

NEW MODEL(S) ADDED → FIRST ISSUE 5/84, COLUMN #1

D-6

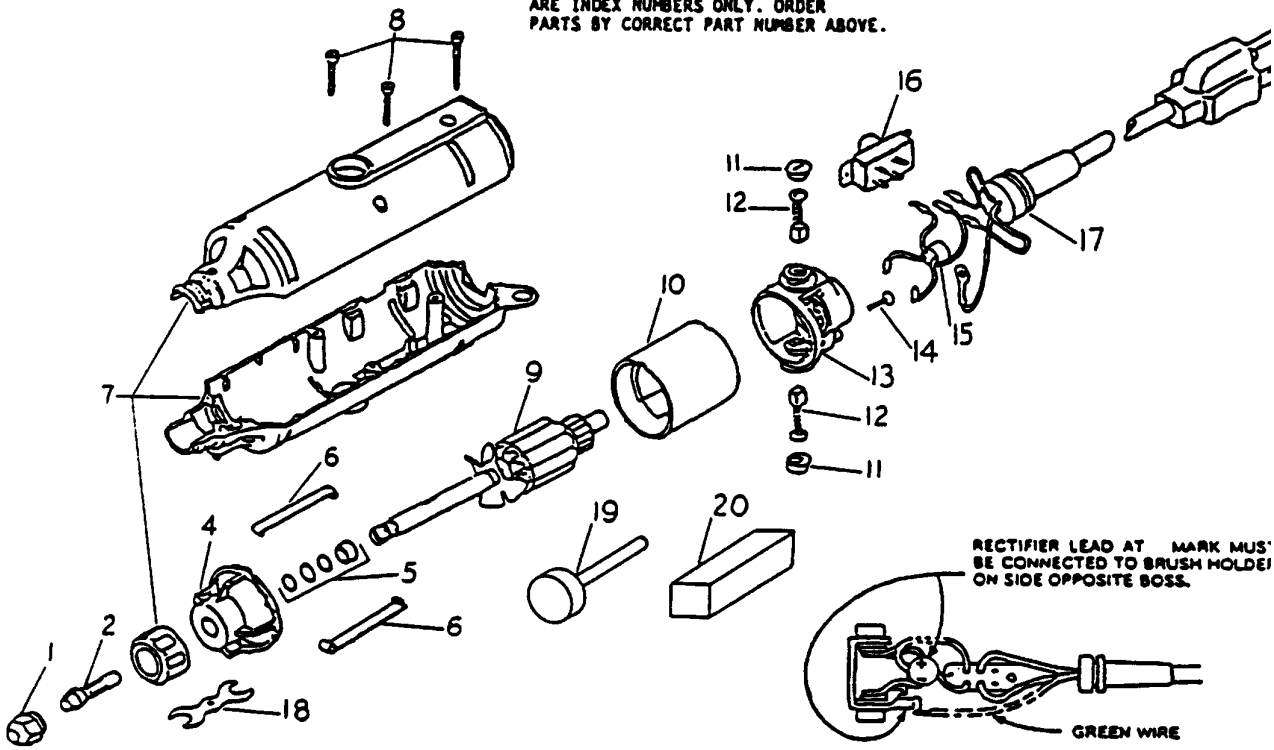


| | | | | | | | | | | | | | | |
|-----------------------------------|----------|---|---|---|---|---|---|---|---|----|----|----|--|--|
| BLACK | X | | | | | | | | | | | | | |
| 30,000 RPM, 0.80 A | X | | | | | | | | | | | | | |
| 115 VOLTS, 50/60 HZ. AC 0.80 AMPS | X | | | | | | | | | | | | | |
| MODEL OR SERVICE NO. COLUMN | 1 | 2 | 3 | 4 | 5 | 6 | 7 | 8 | 9 | 10 | 11 | 12 | | |
| INSTRUCTIONS | COL. NO. | | | | | | | | | | | | | |
| 216044 | 1 | | | | | | | | | | | | | |

| INDEX NO. | PART NO. | ★ WAS PART NO. | DESCRIPTION |
|-----------|----------|----------------|----------------------------------|
| 1 | 206578 | | CHUCK CAP |
| 2 | 206579 | | COLLET |
| 3 | 216831 | | HOUSING CAP SCREW |
| 4 | 216832 | | FRONT BEARING BRACKET |
| 5 | 216833 | | THRUST WASHER ASSORTMENT |
| 6 | 216834 | | BEARING BRACKET CLIPS (PR.) |
| 7 | 216835 | | HOUSING |
| 8 | 216836 | | HOUSING SCREWS - 1 LONG, 2 SHORT |
| 9 | 55990 | 216837 | ARMATURE W/FAN |
| 10 | 216838 | | FIELD W/MAGNET |
| 11 | 216839 | | BRUSH CAP (PR.) |
| 12 | 55993 | 216840 | BRUSHES W/SHUNTS (PR.) |
| 13 | 216841 | | REAR BEARING BRACKET |
| 14 | 216842 | | GROUND SCREW |
| 15 | 55995 | 216843 | RECTIFIER |
| 16 | 206587 | | SWITCH |
| 17 | 216845 | | CORD |
| 18 | 207350 | | WRENCH |
| 19 | 55208 | 207352 | GRINDING DISC |
| 20 | 55207 | 207351 | DRESSING STONE |

| | | | | | | | | | | | | | |
|------------------------|-------------------|--|--|--|--|--|--|--|--|--|--|--|--|
| BASIC PARTS 129-01E | QUANTITY REQUIRED | | | | | | | | | | | | |
| | 1 | | | | | | | | | | | | |
| 1 | | | | | | | | | | | | | |
| 1 | | | | | | | | | | | | | |
| 1 | | | | | | | | | | | | | |
| 1 | | | | | | | | | | | | | |
| 1 | | | | | | | | | | | | | |
| 1 | | | | | | | | | | | | | |
| 1 | | | | | | | | | | | | | |
| 1 | | | | | | | | | | | | | |
| 1 | | | | | | | | | | | | | |
| 1 | | | | | | | | | | | | | |
| 1 | | | | | | | | | | | | | |
| 1 | | | | | | | | | | | | | |
| 1 | | | | | | | | | | | | | |
| 1 | | | | | | | | | | | | | |

CAUTION: NUMBERS SHOWN ON DRAWING ARE INDEX NUMBERS ONLY. ORDER PARTS BY CORRECT PART NUMBER ABOVE.



★ PARTS ARE INTERCHANGEABLE, USE UP EXISTING STOCK.

MANUAL: PROFESSIONAL PRODUCTS
SECTION: NAIL GROOMER

CONTINUED ON REVERSE SIDE
PAGE 3A



PARTS LIST

PET NAIL GROOMER

**USE ONLY GENUINE OSTER PARTS -
USE OF WRONG PARTS MAY BE HAZARDOUS.**

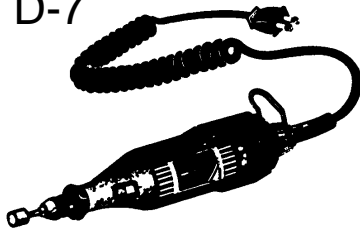
PUBLISHED BY TECHNICAL SERVICES

M-7984 REVISED 10/97

PART NO. REVISION

NEW MODEL(S) ADDED → FIRST ISSUE 87A, COLUMN #1

D-7



| | | | | | | | | | | | | | | |
|--------------------------------------|----------|---|---|---|---|---|---|---|---|----|----|----|--|--|
| 2 SPEED | X | | | | | | | | | | | | | |
| .6 A. LOW SPEED - 1.15 A. HIGH SPEED | X | | | | | | | | | | | | | |
| 120 VOLTS, 50-60 HZ. AC ONLY | X | | | | | | | | | | | | | |
| MODEL OR SERVICE NO. COLUMN | → 1 | 2 | 3 | 4 | 5 | 6 | 7 | 8 | 9 | 10 | 11 | 12 | | |
| INSTRUCTIONS | COL. NO. | | | | | | | | | | | | | |
| 219650 | 1 | | | | | | | | | | | | | |

| INDEX NO. | PART NO. | ★ WAS PART NO. | DESCRIPTION |
|-----------|----------|----------------|---|
| 1 | 58263 | 219940 | CHUCK CAP |
| 2 | 58264 | 219941 | COLLET - 1/8" |
| 3 | 219943 | | HOUSING - UPPER |
| 4 | 219944 | | SHAFT ASSEMBLY - OUTPUT |
| 5 | 219945 | | ARMATURE & COUPLING ASSEMBLY |
| 6 | 58268 | 219946 | FILED ASSEMBLY |
| 7 | 219947 | | COLLET LOCK & SPRING |
| 8 | 58270 | 219948 | BRUSH & SPRING ASSEMBLY |
| 9 | 219949 | | SWITCH ASSEMBLY |
| 10 | 219950 | | HANGER |
| 11 | 58272 | 219951 | CORD |
| 12 | 219952 | | SCREW - HOUSING - * SEE DRAWING PAGE 4B |
| 13 | 207350 | | WRENCH |
| 14 | 219953 | | HOUSING - LOWER |
| 15 | 219741 | | NAMEPLATE |
| 16 | 55208 | 207352 | GRINDING DISC |
| 17 | 55207 | 207351 | DRESSING STONE |
| 18 | 58275 | 219954 | CAP - HOUSING |

BASIC PARTS

129-01-F

QUANTITY REQUIRED

| | | | | | | | | | | | | | | |
|-----|--|--|--|--|--|--|--|--|--|--|--|--|--|--|
| 1 | | | | | | | | | | | | | | |
| 1 | | | | | | | | | | | | | | |
| 1 | | | | | | | | | | | | | | |
| 1 | | | | | | | | | | | | | | |
| 1 | | | | | | | | | | | | | | |
| 1 | | | | | | | | | | | | | | |
| 1PR | | | | | | | | | | | | | | |
| 1 | | | | | | | | | | | | | | |
| 1 | | | | | | | | | | | | | | |
| 1 | | | | | | | | | | | | | | |
| 1 | | | | | | | | | | | | | | |
| 1 | | | | | | | | | | | | | | |
| 1 | | | | | | | | | | | | | | |
| 1 | | | | | | | | | | | | | | |
| 1 | | | | | | | | | | | | | | |

MAINTENANCE OF REPLACEABLE BRUSHES

The brushes should be inspected frequently when tools are used continuously. If your tool runs sporadically, loses power, makes unusual noises or runs at a reduced speed, check the brushes. To continue using the tool in this condition will permanently damage your tool.

CAUTION: Do not force the brush holder to rotate once you feel it stop. To do so will damage the tool.

If the brush is less than 1/8" long and the end surface of the brush that contacts the commutator is rough and/or pitted, they should be replaced. Check both brushes. Usually the brushes will not wear out simultaneously. If one brush is worn out replace both brushes. Insert the spring portion of the brush spring assembly into the brush holder opening first. Make sure the brushes are installed as illustrated. The curved surface of the brush must match the curvature of the commutator.

After replacing brushes the tool should be run at no-load; place it on a clean surface and run it freely for 5 minutes before loading (or using) the tool. This will allow the brushes to "seat" properly and will give you more hours of life from each set of brushes. This will also extend the total life of your tool since the commutator surface will "wear" longer.

WARNING: Be aware that the brush can fly out of tool toward eyes when opening the brush holder lock.

With the cord unplugged, use thumb pressure or small screwdriver to depress the brush holder lock and rotate the holder (right-side down and left-side up;) slowly to prevent the brush and spring from ejecting out of the holder. While rotating the holder slowly, you will begin to see the brush. Place

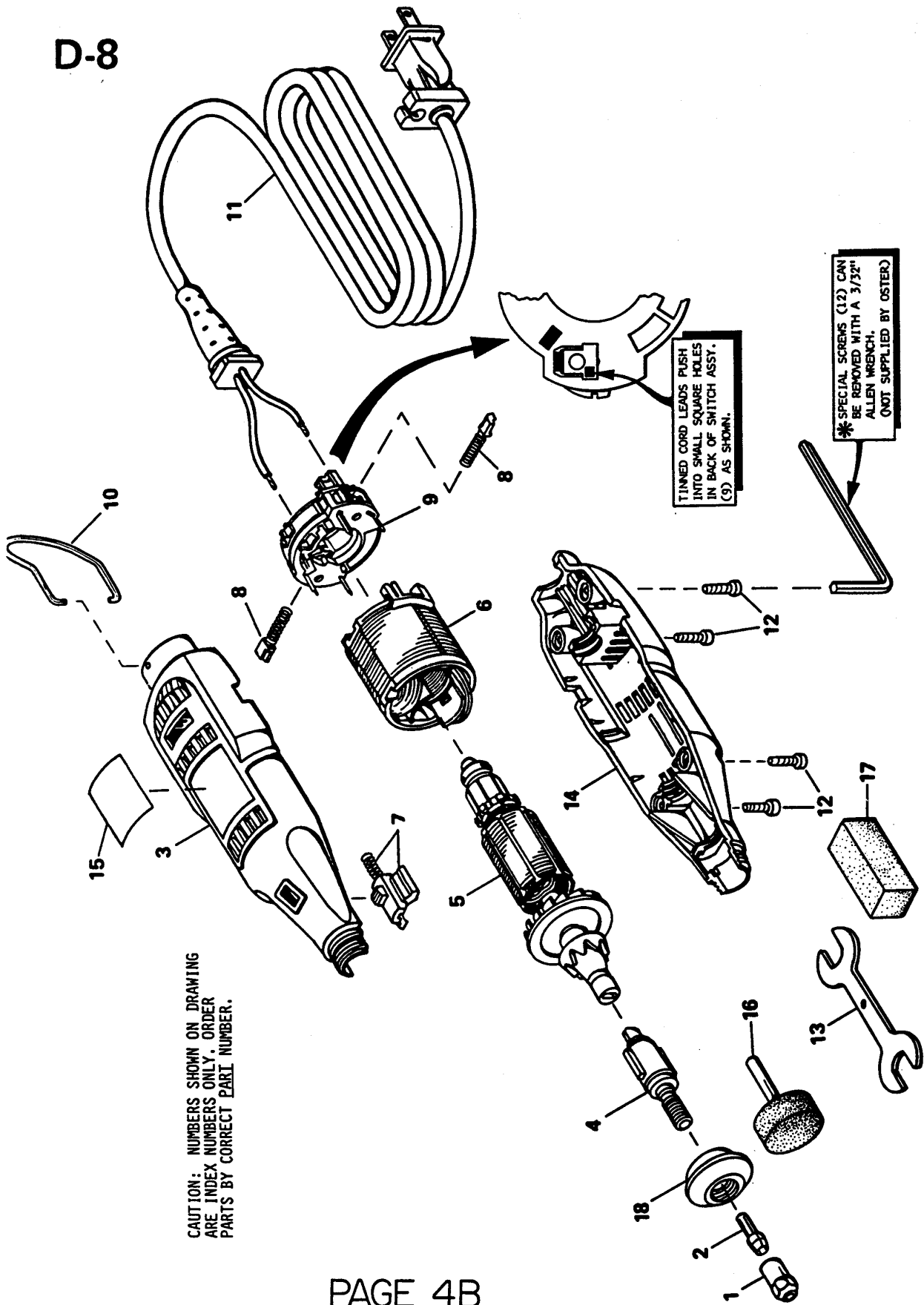
★ PARTS ARE INTERCHANGEABLE, USE UP EXISTING STOCK.

MANUAL: PROFESSIONAL PRODUCTS
SECTION: NAIL GROOMER

CONTINUED ON REVERSE SIDE
PAGE 3B



150 CADILLAC LANE
McMINNVILLE, TN 37110



CAUTION: NUMBERS SHOWN ON DRAWING ARE INDEX NUMBERS ONLY. ORDER PARTS BY CORRECT PART NUMBER.



PARTS LIST

PET NAIL GROOMER

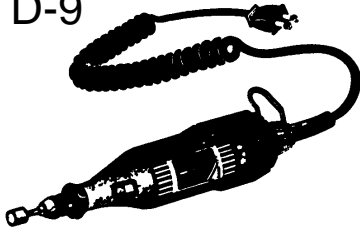
**USE ONLY GENUINE OSTER PARTS -
USE OF WRONG PARTS MAY BE HAZARDOUS.**

PUBLISHED BY TECHNICAL SERVICES

M-8057 REVISED 10/97

PART NO. REVISION

D-9



NEW MODEL(S) ADDED → FIRST ISSUE 8/88, COLUMN #1

| | | | | | | | | | | | | | | | |
|------------------------------|----------|---|---|---|---|---|---|---|---|----|----|----|--|--|--|
| 2 SPEED | X | | | | | | | | | | | | | | |
| 120 VOLTS, 50-60 HZ. AC ONLY | X | | | | | | | | | | | | | | |
| MODEL OR SERVICE NO. COLUMN | → 1 | 2 | 3 | 4 | 5 | 6 | 7 | 8 | 9 | 10 | 11 | 12 | | | |
| INSTRUCTIONS | COL. NO. | | | | | | | | | | | | | | |
| 219650 | 1 | | | | | | | | | | | | | | |

| | |
|--------------|----------|
| INSTRUCTIONS | COL. NO. |
| 219650 | 1 |

| INDEX NO. | PART NO. | ★ WAS PART NO. | DESCRIPTION |
|-----------|----------|----------------|---|
| 1 | 58263 | 219940 | CHUCK CAP |
| 2 | 58264 | 219941 | COLLET - 1/8" |
| 3 | 220390 | | HOUSING - UPPER |
| 4 | 220391 | | SHAFT ASSEMBLY - OUTPUT |
| 5 | 220392 | | ARMATURE |
| 6 | 58268 | 219946 | FIELD ASSEMBLY |
| 7 | 220393 | | COLLET LOCK & SPRING |
| 8 | 58270 | 219948 | BRUSH & SPRING ASSEMBLY |
| 9 | 219949 | | SWITCH ASSEMBLY |
| 10 | 219950 | | HANGER |
| 11 | 58272 | 219951 | CORD |
| 12 | 219952 | | SCREW - HOUSING - * SEE DRAWING PAGE 4C |
| 13 | 58302 | 220220 | WRENCH |
| 14 | 220394 | | HOUSING - LOWER |
| 15 | 220818 | | NAMEPLATE |
| 16 | 55208 | 207352 | GRINDING DISC |
| 17 | 55207 | 207351 | DRESSING STONE |
| 18 | 58275 | 219954 | CAP - HOUSING |
| 19 | 58322 | 220395 | COUPLING |
| 20 | 220396 | | SCREW - HOUSING |

BASIC PARTS

129-01-H

QUANTITY REQUIRED

| | | | | | | | | | | | | | | | |
|-----|--|--|--|--|--|--|--|--|--|--|--|--|--|--|--|
| 1 | | | | | | | | | | | | | | | |
| 1 | | | | | | | | | | | | | | | |
| 1 | | | | | | | | | | | | | | | |
| 1 | | | | | | | | | | | | | | | |
| 1 | | | | | | | | | | | | | | | |
| 1PR | | | | | | | | | | | | | | | |
| 1 | | | | | | | | | | | | | | | |
| 1 | | | | | | | | | | | | | | | |
| 1 | | | | | | | | | | | | | | | |
| 1 | | | | | | | | | | | | | | | |
| 1 | | | | | | | | | | | | | | | |
| 1 | | | | | | | | | | | | | | | |
| 2 | | | | | | | | | | | | | | | |

MAINTENANCE OF REPLACEABLE BRUSHES

The brushes should be inspected frequently when tools are used continuously. If your tool runs sporadically, loses power, makes unusual noises or runs at a reduced speed, check the brushes. To continue using the tool in this condition will permanently damage your tool.

CAUTION: Do not force the brush holder to rotate once you feel it stop. To do so will damage the tool.

If the brush is less than 1/8" long and the end surface of the brush that contacts the commutator is rough and/or pitted, they should be replaced. Check both brushes. Usually the brushes will not wear out simultaneously. If one brush is worn out replace both brushes. Insert the spring portion of the brush spring assembly into the brush holder opening first. Make sure the brushes are installed as illustrated. The curved surface of the brush must match the curvature of the commutator.

After replacing brushes the tool should be run at no-load; place it on a clean surface and run it freely for 5 minutes before loading (or using) the tool. This will allow the brushes to "seat" properly and will give you more hours of life from each set of brushes. This will also extend the total life of your tool since the commutator surface will "wear" longer.

WARNING: Be aware that the brush can fly out of tool toward eyes when opening the brush holder lock.

With the cord unplugged, use thumb pressure or small screwdriver to depress the brush holder lock and rotate the holder (right-side down and left-side up;) slowly to prevent the brush and spring from ejecting out of the holder. While rotating the holder slowly, you will begin to see the brush. Place

★ PARTS ARE INTERCHANGEABLE, USE UP EXISTING STOCK.

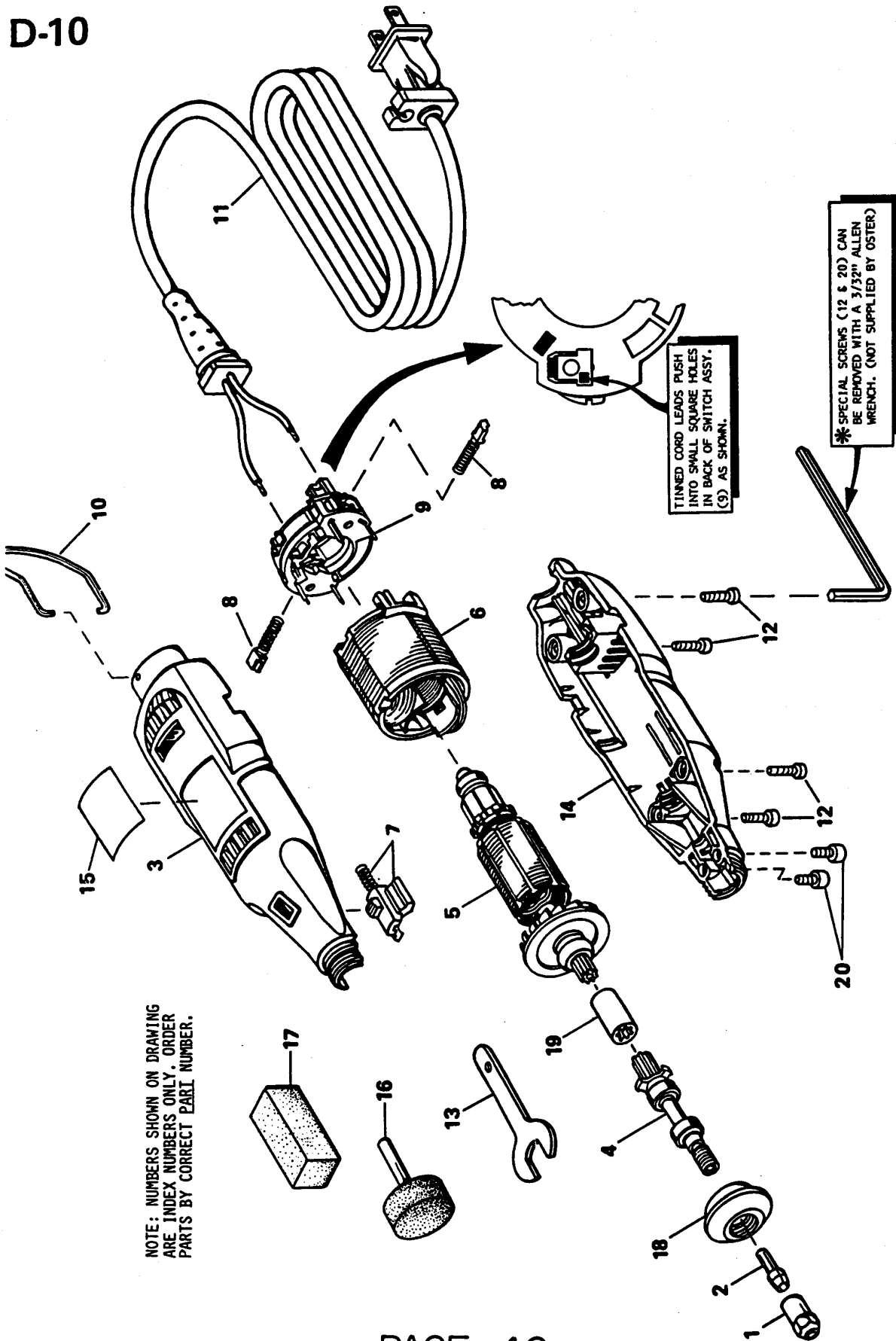
MANUAL: PROFESSIONAL PRODUCTS
SECTION: ALL OTHERS

CONTINUED ON REVERSE SIDE

PAGE 3C



150 CADILLAC LANE
McMINNVILLE, TN 37110



NOTE: NUMBERS SHOWN ON DRAWING ARE INDEX NUMBERS ONLY. ORDER PARTS BY CORRECT PART NUMBER.



PARTS LIST

USE ONLY GENUINE OSTER PARTS -
USE OF WRONG PARTS MAY BE HAZARDOUS.

PUBLISHED BY TECHNICAL SERVICES

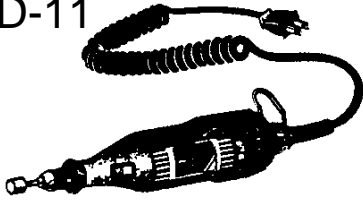
PET NAIL GROOMER

NEW MODEL(S) ADDED → FIRST ISSUE 5/89, COLUMN #1

M-8093 REV. 10/97

PART NO. REVISION

D-11



| INSTRUCTIONS | COL. NO. |
|--------------|----------|
| 221672 | 1 |

| MODEL OR SERVICE NO. COLUMN → | 1 | 2 | 3 | 4 | 5 | 6 | 7 | 8 | 9 | 10 | 11 | 12 |
|-------------------------------|---|---|---|---|---|---|---|---|---|----|----|----|
| 2 SPEED | X | | | | | | | | | | | |
| 120 VOLTS, 50-60 HZ., AC ONLY | X | | | | | | | | | | | |

SEE PRICE & CROSS REF.
LIST FOR PRICES

BASIC PARTS

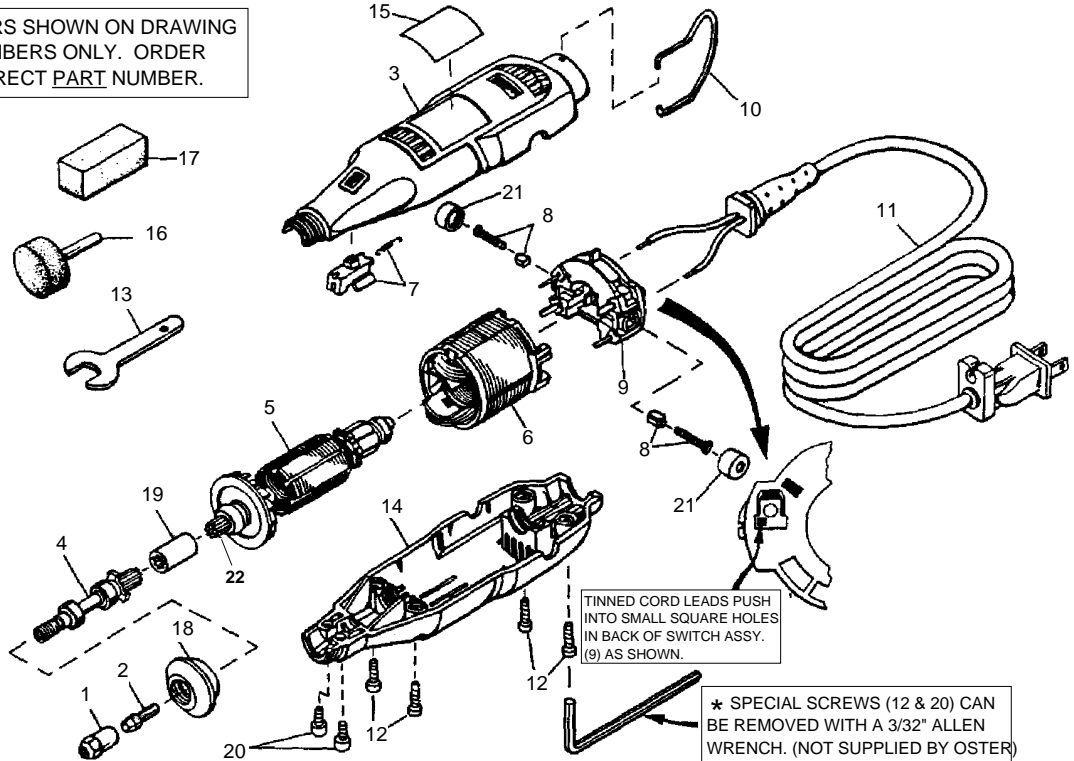
129-01-J

| INDEX NO. | PART NO. | ★ WAS PART NO. | DESCRIPTION |
|-----------|----------|----------------|----------------------------------|
| 1 | 58263 | 219940 | CHUCK CAP |
| 2 | 58264 | 219941 | COLLET - 1/8" |
| 3 | 221314 | | HOUSING - UPPER |
| 4 | 220391 | | SHAFT ASSY. - OUTPUT |
| 5 | 220392 | | ARMATURE |
| 6 | 58268 | 219946 | FIELD ASSY. |
| 7 | 221315 | | COLLET LOCK & SPRING |
| 8 | 58477 | 221316 | BRUSH & SPRING ASSY. |
| 9 | 58478 | 221317 | SWITCH ASSY. |
| 10 | 219950 | | HANGER |
| 11 | 58272 | 219951 | CORD |
| 12 | 219952 | | * SCREW - HOUSING - PACKAGE OF 4 |
| 13 | 58302 | 220220 | WRENCH |
| 14 | 221318 | | HOUSING - LOWER |
| 15 | 221671 | | NAMEPLATE |
| 16 | 55208 | 207352 | GRINDING DISC |
| 17 | 55207 | 207351 | DRESSING STONE |
| 18 | 58275 | 219954 | CAP - HOUSING |
| 19 | 58322 | 220395 | COUPLING |
| 20 | 220396 | | * SCREW - HOUSING - PACKAGE OF 2 |
| 21 | 221319 | | CAP - BRUSH - PACKAGE OF 2 |
| 22 | 216844 | | SPLINE - BUSHING |

QUANTITY REQUIRED

| 1 | 2 | 3 | 4 | 5 | 6 | 7 | 8 | 9 | 10 | 11 | 12 |
|-----|---|---|---|---|---|---|---|---|----|----|----|
| 1 | | | | | | | | | | | |
| 1 | | | | | | | | | | | |
| 1 | | | | | | | | | | | |
| 1 | | | | | | | | | | | |
| 1 | | | | | | | | | | | |
| 1 | | | | | | | | | | | |
| 1 | | | | | | | | | | | |
| 1 | | | | | | | | | | | |
| 1PR | | | | | | | | | | | |
| 1 | | | | | | | | | | | |
| 1 | | | | | | | | | | | |
| 1 | | | | | | | | | | | |
| 1 | | | | | | | | | | | |
| 1 | | | | | | | | | | | |
| 1 | | | | | | | | | | | |
| 1PR | | | | | | | | | | | |
| 1PR | | | | | | | | | | | |
| 1 | | | | | | | | | | | |

NOTE: NUMBERS SHOWN ON DRAWING
ARE INDEX NUMBERS ONLY. ORDER
PARTS BY CORRECT PART NUMBER.



★ PARTS ARE INTERCHANGEABLE, USE UP EXISTING STOCK.

MANUAL: PROFESSIONAL PRODUCTS
SECTION: ALL OTHERS

CONTINUED ON REVERSE SIDE

PAGE 3D

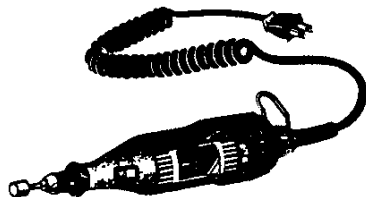


150 CADILLAC LANE
McMINNVILLE, TN 37110



PARTS LIST

PET NAIL GROOMER



| INSTRUCTIONS | COL. NO. |
|--------------|----------|
| 600498 | 1 |
| | |

**USE ONLY GENUINE OSTER PARTS -
USE OF WRONG PARTS MAY BE HAZARDOUS.**

PUBLISHED BY TECHNICAL SERVICES

| | |
|-------------------|------------|
| PP-114 | REV. 10/97 |
| PART NO. REVISION | |

NEW MODEL(S) ADDED → FIRST ISSUE 4/93, COLUMN #1

| | | | | | | | | | | | | | | | | | | | |
|-------------------------------|---|---|---|---|---|---|---|---|---|----|----|----|--|--|--|--|--|--|--|
| | | | | | | | | | | | | | | | | | | | |
| | | | | | | | | | | | | | | | | | | | |
| | | | | | | | | | | | | | | | | | | | |
| | | | | | | | | | | | | | | | | | | | |
| 2 SPEED | X | | | | | | | | | | | | | | | | | | |
| 120 VOLTS, 50-60 HZ., AC ONLY | X | | | | | | | | | | | | | | | | | | |
| MODEL OR SERVICE NO. COLUMN → | 1 | 2 | 3 | 4 | 5 | 6 | 7 | 8 | 9 | 10 | 11 | 12 | | | | | | | |

**SEE PRICE & CROSS REF.
LIST FOR PRICES**

| INDEX NO. | PART NO. | ★ WAS PART NO. | DESCRIPTION |
|-----------|----------|----------------|--------------------------------|
| 1 | 219952 | | SCREW - HOUSING - PACKAGE OF 4 |
| 2 | 58263 | 219940 | CHUCK CAP |
| 3 | 58264 | 219941 | 1/8" COLLET |
| 4 | 59184 | 600758 | HOUSING CAP |
| 5 | 600759 | | ARMATURE & BEARING ASSEMBLY |
| 6 | 59189 | 600760 | FIELD ASSEMBLY |
| 7 | 600761 | | COLLET LOCK & SPRING |
| 8 | 600762 | | HOUSING SET - UPPER & LOWER |
| 9 | 219950 | | HANGER |
| 10 | 221319 | | CAP - BRUSH - PACKAGE OF 2 |
| 11 | 58477 | 221316 | BRUSH & SPRING ASSEMBLY |
| 12 | 58478 | 221317 | SWITCH ASSEMBLY |
| 13 | 58272 | 219951 | CORD |
| 14 | 58302 | 220220 | WRENCH |
| 15 | 600286 | | NAMEPLATE |
| 16 | 600287 | | DATA INSERT |

BASIC PARTS

129-01-K

QUANTITY REQUIRED

1PKG
1
1
1
1
1
1
1
1PKG
1
1
1
1
1
1

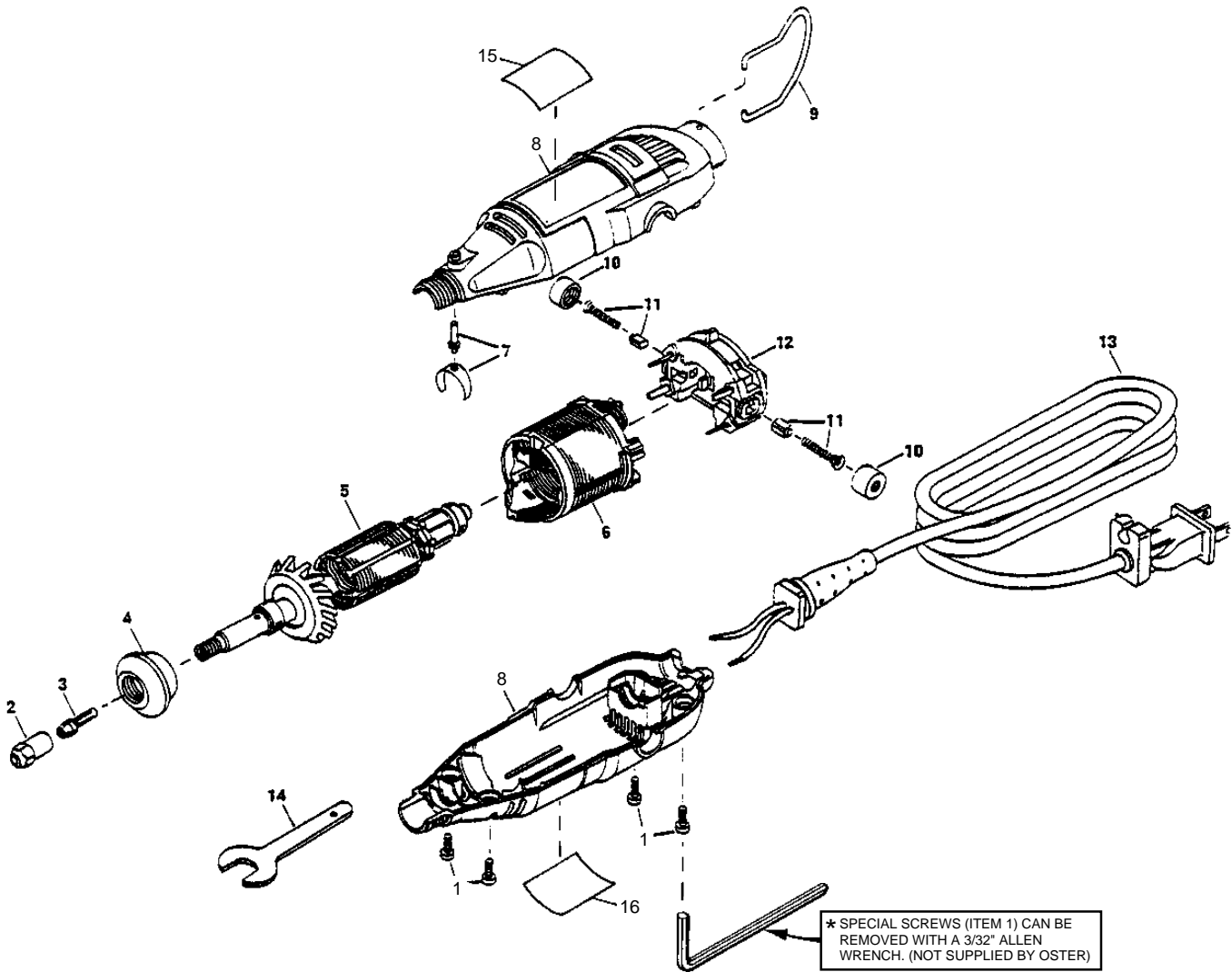
★ PARTS ARE INTERCHANGEABLE, USE UP EXISTING STOCK.

MANUAL: PROFESSIONAL PRODUCTS
SECTION: ALL OTHERS

CONTINUED ON REVERSE SIDE



150 CADILLAC LANE
McMINNVILLE, TN 37110





PARTS LIST

RECHARGEABLE
PET NAIL GROOMER



| INSTRUCTIONS | COL. NO. |
|--------------|----------|
| 600498 | 1 |
| | |

| INDEX NO. | PART NO. | ★ WAS PART NO. | DESCRIPTION |
|-----------|----------|----------------|----------------------------------|
| 1 | 600763 | | COLLET NUT |
| 2 | 58264 | 219941 | 1/8" COLLET |
| 3 | 600764 | | SHAFT LOCK ASSEMBLY |
| 4 | 600765 | | MOTOR AND SHAFT ASSEMBLY |
| 5 | 600766 | | SCREW - PACKAGE OF 2 |
| 6 | 600767 | | HOUSING SET - UPPER & LOWER |
| 7 | 600728 | | CHARGER (MODEL NO. 6131-01) |
| 8 | 59163 | 600727 | BATTERY PACK (MODEL NO. 6130-01) |
| 9 | 600768 | | SWITCH ASSEMBLY |
| 10 | 600737 | | NAMEPLATE |
| 11 | 600738 | | DATA INSERT |

**USE ONLY GENUINE OSTER PARTS -
USE OF WRONG PARTS MAY BE HAZARDOUS.**

PUBLISHED BY TECHNICAL SERVICES

NEW MODEL(S) ADDED → FIRST ISSUE 4/93, COLUMN #1

| | |
|-------------------|------------|
| PP-115 | REV. 10/97 |
| PART NO. REVISION | |

| | | | | | | | | | | | | | | | | | | | |
|-------------------------------|---|---|---|---|---|---|---|---|---|----|----|----|--|--|--|--|--|--|--|
| | | | | | | | | | | | | | | | | | | | |
| | | | | | | | | | | | | | | | | | | | |
| | | | | | | | | | | | | | | | | | | | |
| | | | | | | | | | | | | | | | | | | | |
| 2 SPEED | X | | | | | | | | | | | | | | | | | | |
| 4.8 VOLTS DC ONLY | X | | | | | | | | | | | | | | | | | | |
| MODEL OR SERVICE NO. COLUMN → | 1 | 2 | 3 | 4 | 5 | 6 | 7 | 8 | 9 | 10 | 11 | 12 | | | | | | | |

**SEE PRICE & CROSS REF.
LIST FOR PRICES**

BASIC PARTS

129-10

QUANTITY REQUIRED

| | | | | | | | | | | | | | | | | | | | |
|------|--|--|--|--|--|--|--|--|--|--|--|--|--|--|--|--|--|--|--|
| 1 | | | | | | | | | | | | | | | | | | | |
| 1 | | | | | | | | | | | | | | | | | | | |
| 1 | | | | | | | | | | | | | | | | | | | |
| 1 | | | | | | | | | | | | | | | | | | | |
| 1 | | | | | | | | | | | | | | | | | | | |
| 1PKG | | | | | | | | | | | | | | | | | | | |
| 1 | | | | | | | | | | | | | | | | | | | |
| 1 | | | | | | | | | | | | | | | | | | | |
| 1 | | | | | | | | | | | | | | | | | | | |
| 1 | | | | | | | | | | | | | | | | | | | |

★ PARTS ARE INTERCHANGEABLE, USE UP EXISTING STOCK.

MANUAL: PROFESSIONAL PRODUCTS
SECTION: ALL OTHERS

CONTINUED ON REVERSE SIDE

* SPECIAL SCREWS (ITEM 5) CAN BE REMOVED WITH A 3/32" ALLEN WRENCH. (NOT SUPPLIED BY OSTER)

